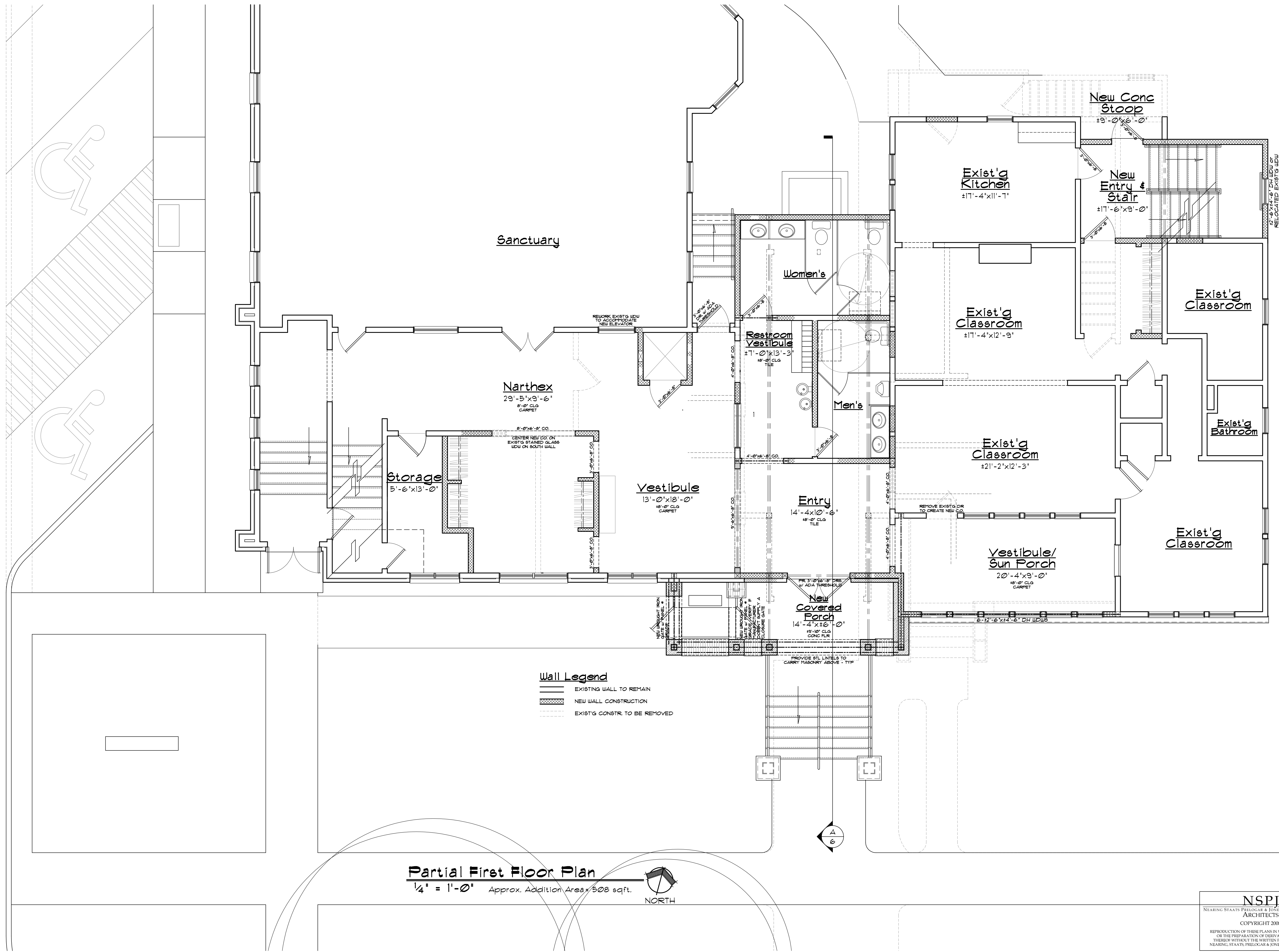


H:\448207-1st Presb Church\4482-plan.dwg, 11/10/2008 12:10:47 PM, pataas, © NSPJ Architects



Partial First Floor Plan

1/4" = 1'-0" Approx. Addition Area = 508 sqft.



NSPJ
NEARING STAATS PRELOGAR & JONES AIA CHARTERED ARCHITECTS

3515 W. 75TH ST., STE. 201
PRAIRIE VILLAGE, KANSAS 66208
WWW.NSPJARCH.COM
PHONE 913.831.1415 FAX 913.831.1563

FIRST PRESBYTERIAN CHURCH
344 MAIN STREET
OSAWATOMIE, KANSAS

AN ADDITION & REMODEL TO:

REVISIONS
10-29-08

DATE
Oct. 6, 2008
JOB No.
448207
SHEET No.

NSPJ
NEARING STAATS PRELOGAR & JONES AIA CHARTERED ARCHITECTS
COPYRIGHT 2008

REPRODUCTION OF THESE PLANS IN WHOLE OR PART OR THE PREPARATION OF DERIVATIVE WORKS THEREOF WITHOUT THE WRITTEN PERMISSION OF NEARING, STAATS, PRELOGAR & JONES IS PROHIBITED.

3

of Seven