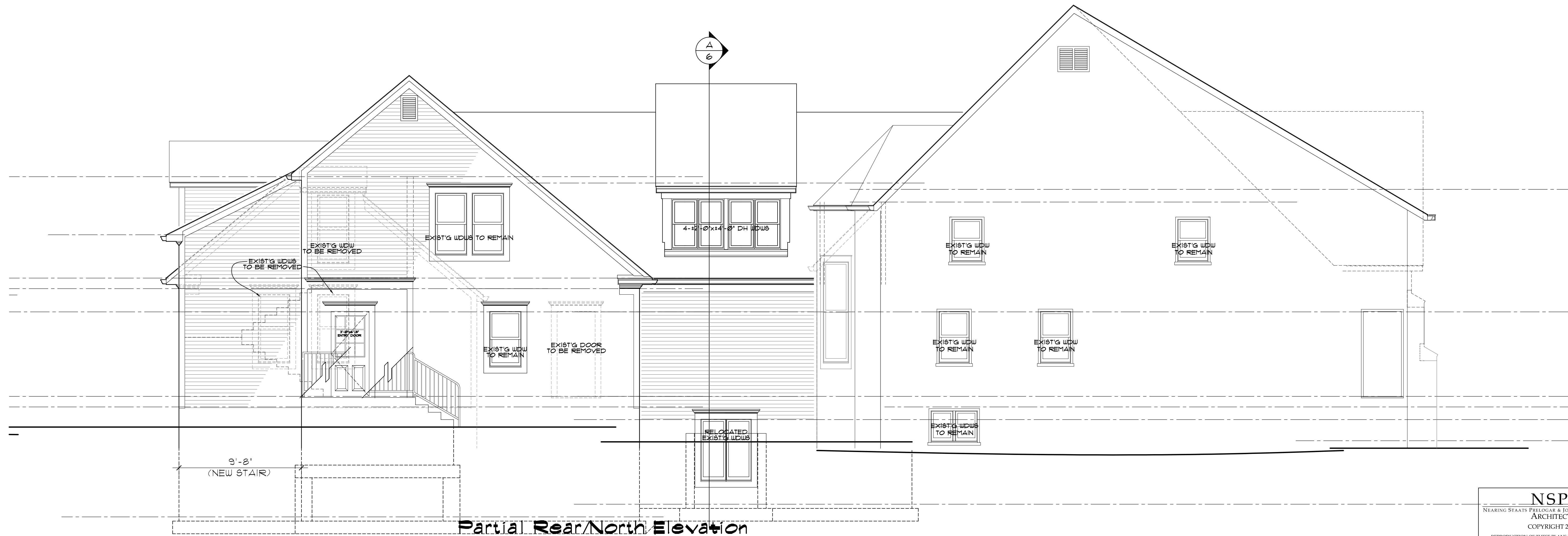


Partial East Elevation
 $\frac{1}{4}'' = 1'-0''$



Partial Rear/North Elevation
 $\frac{1}{4}'' = 1'-0''$

REVISIONS
 10-29-08

DATE
 Oct. 6, 2008
 JOB No.
 448207
 SHEET No.

NSPJ
 NEARING STAATS PRELOGAR & JONES AIA CHARTERED
 ARCHITECTS
 COPYRIGHT 2008
 REPRODUCTION OF THESE PLANS IN WHOLE OR PART
 OR THE PREPARATION OF DERIVATIVE WORKS
 THEREOF WITHOUT THE WRITTEN PERMISSION OF
 NEARING, STAATS, PRELOGAR & JONES IS PROHIBITED.

H:\448207-1st Presb Church\4482-plan.dwg, 11/11/2008 9:08:33 AM, psnans, © NSPJ Architects